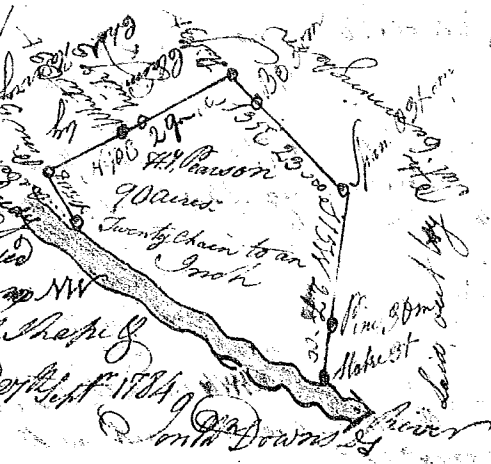
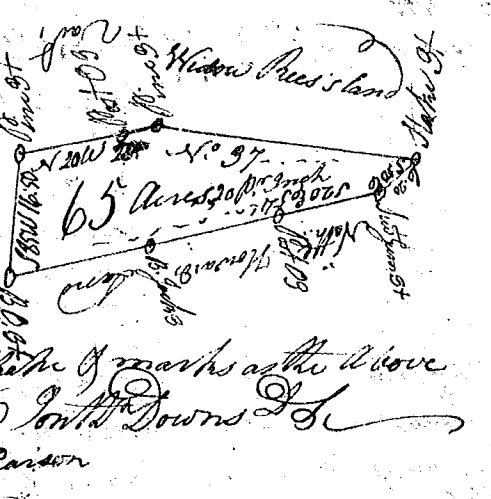


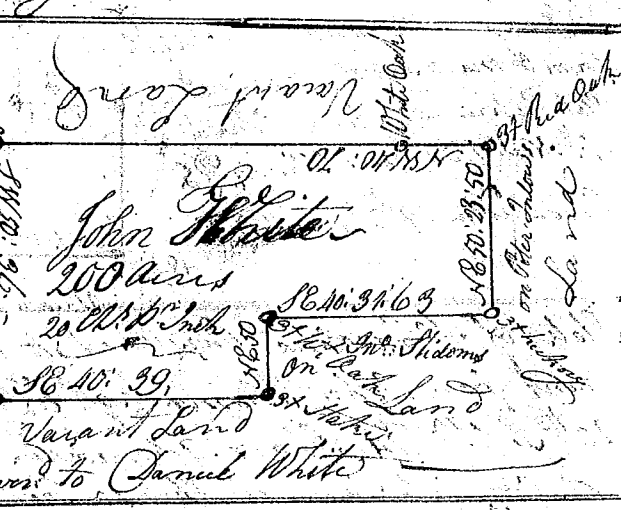
State of South Carolina Pursuant to a (320)  
 Warrant from John Thomas Esq. C. L. dated the  
 20<sup>th</sup> Sept. 1784. I have admeasured & laid out  
 unto Harry Pearson a Tract of land containing  
 90 acres situate in 96<sup>th</sup> District on the N<sup>o</sup> side  
 of Rudy's River Below the Old Boundary. Bounded  
 E<sup>o</sup> & N<sup>o</sup> on lands laid out by Col. Clabornings as  
 by lands claim'd by Charles Hurvey & hath such shape &  
 marks as the annex'd plat represents, Survey  
 Recorded the 15<sup>th</sup> Jan<sup>y</sup> 1785 (S. to Harry Pearson)



State of South Carolina Pursuant to a Warrant  
 from John Thomas Esq. C. L. dated the 20<sup>th</sup> Sept.  
 I have admeasured and laid out unto Harry  
 Pearson a Tract of land containing 65 Acres  
 Situate in 96<sup>th</sup> District on a branch of Little River  
 Call'd the Beaverdam below the Ancient Boundary  
 Bounded N<sup>o</sup> on Nathaniel Howard's land W<sup>o</sup> on  
 the Widows Reiss's land S<sup>o</sup> on land laid out  
 and all other sides Vacant & hath such shape & marks as the above  
 Plat Represents Survey'd the 28<sup>th</sup> Sept. 1784  
 Recorded the 15<sup>th</sup> Jan<sup>y</sup> 1785 (S. to Harry Pearson)



State of S. Carolina, Pursuant to  
 a Warrant from Col. Thomas Esq. Com.  
 Locations I have admeasured & laid out  
 unto John White a Tract of 200 acres  
 of land Situate in 96<sup>th</sup> District on the  
 Waters of Sugar River Beaverdam reach  
 Bounding E<sup>o</sup> by on land laid out to  
 Potter below all other sides Vacant  
 & land laid out & hath such shape & marks  
 as the annex'd plat represents  
 Survey'd the 11<sup>th</sup> Jan<sup>y</sup> 1785  
 Recorded the 17<sup>th</sup> Jan<sup>y</sup> 1785 (Delivered to Carniel White)



State of S. Carolina  
 Pursuant to a warrant from John Tho-  
 mas Esq. Com. Locations dated the 28<sup>th</sup> Sept.  
 1784. I have admeasured & laid out unto Wm  
 Davidson a Tract of land containing  
 200 Acres. Situate in Ninety 6<sup>th</sup> District  
 East of the Old Boundaries on both Sides  
 of Sarriett's creek of Broad River. Bounding  
 on all sides on Vacant Land & hath such  
 shape & marks as the annex'd plat represents  
 Survey'd the 24<sup>th</sup> Nov<sup>r</sup> 1784  
 Recorded the 7<sup>th</sup> Jan<sup>y</sup> 1785  
 Geo. Salmon



VACANT LAND  
 L.A.M.G. 2